

CITATION 500

CITATION 300

/



OWNER'S
MANUAL

harman/kardon
by HARMAN

/ IMPORTANT SAFETY INSTRUCTIONS

Do Not Use Extension Cords

To avoid safety hazards, use only the power cord supplied with this product. We do not recommend that extension cords be used with this product. As with all electrical devices, do not run power cords under rugs or carpets, or place heavy objects on them. Damaged power cords should be replaced immediately by an authorized service center with a cord that meets factory specifications.

Handle the AC Power Cord Gently

When disconnecting the power cord from an AC outlet, always pull the plug; never pull the cord. If you do not intend to use your speaker for any considerable length of time, disconnect the plug from the AC outlet.

Do Not Open the Cabinet

There are no user-serviceable components inside this product. Opening the cabinet may present a shock hazard, and any modification to the product will void your warranty. If water accidentally falls inside this product, disconnect it from the AC power source immediately, and consult an authorized service center.

/ TABLE OF CONTENTS

IMPORTANT SAFETY INSTRUCTIONS.....	2
INTRODUCTION	4
WHAT'S IN THE BOX	5
PRODUCT OVERVIEW	6
PLACEMENT	8
POWER ON	9
CONNECTING TO WI-FI	10
USING YOUR CITATION SPEAKER.....	11
SETTINGS.....	17
SPECIFICATIONS.....	19
TROUBLESHOOTING	21
TRADEMARKS	22

/ INTRODUCTION

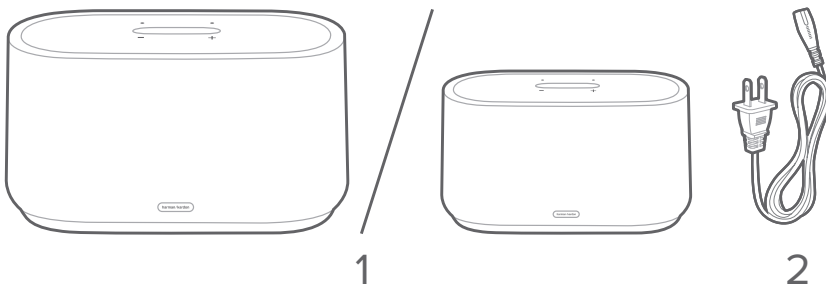
This manual includes information on CITATION 300 and CITATION 500 speakers. We encourage you to take a few minutes to read this manual, which describes the products and includes step-by-step instructions to help you set up and get started. Read and understand all the safety instructions before using your product.

This product may have an important software update available. Please follow the instructions to connect the product to Wi-Fi to ensure that your product has the most recent software updates.

Design and specifications are subject to change without notice. If you have any questions about the products, their installation or their operation, please contact your Harman Kardon retailer or customer service, or visit us at www.harmankardon.com

/ WHAT'S IN THE BOX

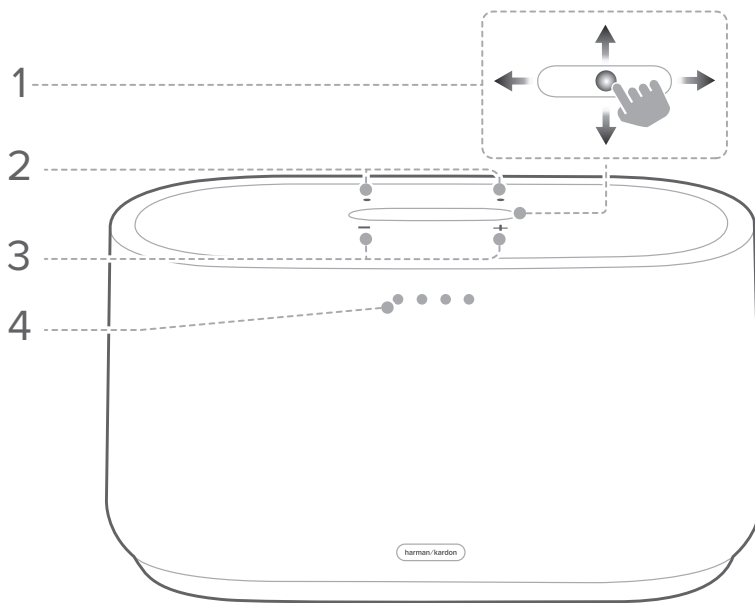
Carefully unpack the box and check if the following parts are included. If any part is damaged, do not use it, contact your Harman Kardon retailer or customer service.









1. Main unit (CITATION 500 / CITATION 300)
2. Power cord

PRODUCT OVERVIEW

Top Panel and Front Side



1. Touch screen (Swipe up / down / left / right for more functions)

	Wi-Fi signal indicator.
	Press to mute or unmute the microphone.
	Push to talk to Xiaowei Voice Assistant.
	<ul style="list-style-type: none"> • Press to enter Bluetooth pairing mode. • Press and hold more than 3 seconds to disable Bluetooth.
	<ul style="list-style-type: none"> • Press to customize the general settings.
	<ul style="list-style-type: none"> • Press to check the system information of this product.





2. Microphones

3. - / + (Volume)

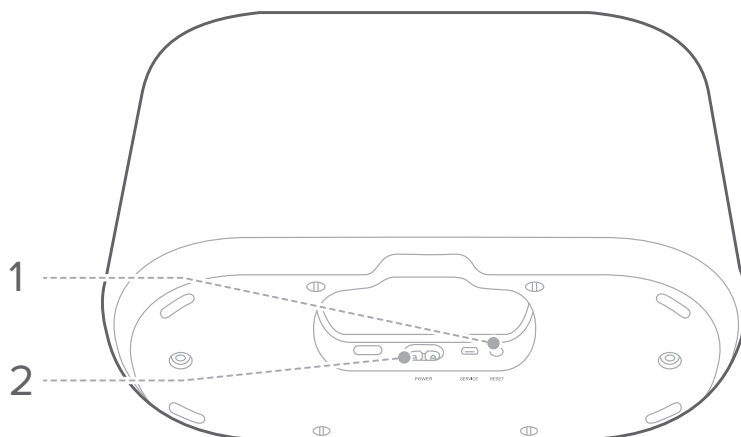
- Press to decrease or increase the volume.

4. LED indicators

- Light on when active.
- Xiaowei status indicators:

	Activated
	Listening
	Responding
	Microphone muted

Bottom Side



1. RESET

- Press and hold for 5 seconds to restore the factory settings.

2. POWER

- Connect to the power supply.

/ PLACEMENT

Place your Citation speaker on any flat and stable surface near a live AC (mains) outlet.

NOTES:

- You can place your Citation speaker anywhere in your house, from the basement to upstairs, and from the bedroom to the kitchen.
- For a better connection quality, place the speaker as close to your wireless router as possible.

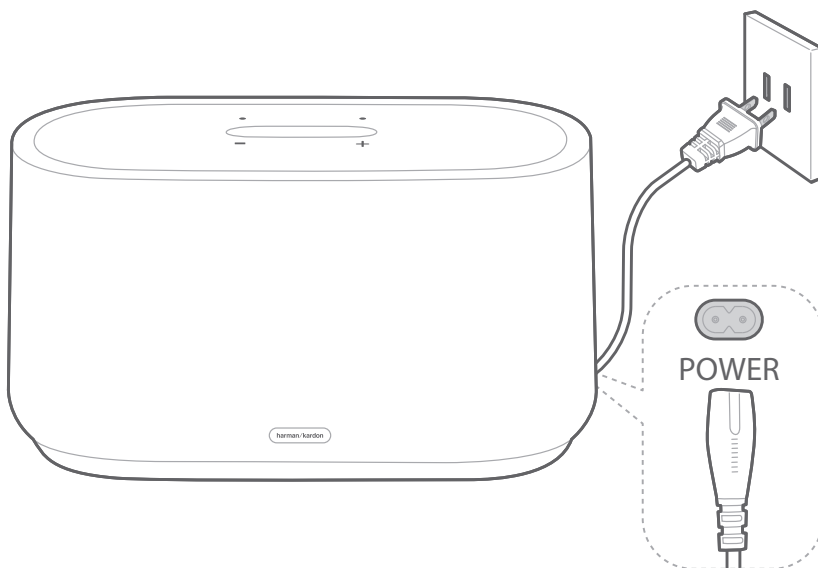
/ POWER ON

NOTES:

- Use the provided power cord only.
- When you disconnect the power cord, always pull the plug, never the cable.

1) Plug one end of the AC power cord into the POWER connector on the bottom of the speaker, then plug the other end to a live AC (mains) outlet.

→ The speaker will automatically power on and the touch screen will turn on.



2) Select your language as instructed on the touch screen for the first-time setting.

/ CONNECTING TO WI-FI

Your Citation speaker is required to connect Wi-Fi with the HK Citation / Surround app.

NOTES:

- If you encounter any setup issues, make sure to enable Bluetooth and location services on your smartphone or tablet.
- Make sure that your Citation speaker is connected to the same wireless network as your smartphone or tablet.

- 1) Scan the QR code below or search “HK Citation / Surround” from the AppStore (for iOS devices) or from 百度手机助手 (for Android devices) and download it.



- 2) Power on your Citation speaker.
- 3) Run the HK Citation / Surround app and set up your CITATION 300/500 as instructed in the app. Always follow the instructions in the app to complete the Wi-Fi setup. You can associate CITATION 300/500 with Xiaowei during or after the first-time setup (See "Talk to Voice Assistant" in the chapter "USING YOUR CITATION SPEAKER").

NOTE:

- Make sure that you have updated the HK Citation / Surround app to the latest version, and have enabled the Bluetooth and location service (iOS / Android).

USING YOUR CITATION SPEAKER

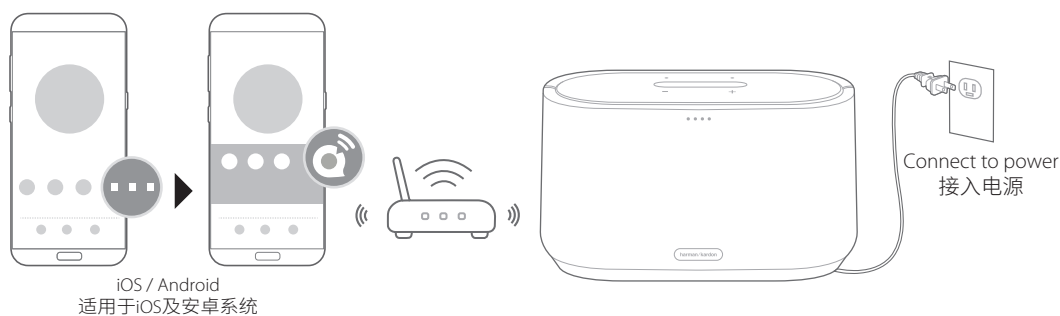
Play Music

Stream QQ Music via Wi-Fi

NOTES:

- The Citation speaker can support audio streaming but not video streaming.
- Make sure that QPlay is enabled while streaming music via Wi-Fi.

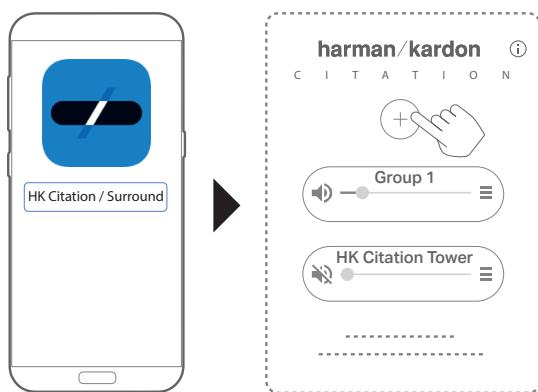
- 1) Download and run the QQ Music app  on your smartphone or tablet.
- 2) Tap “设置” > “QPlay与车载音乐” > “音箱” > “开启” in the app to enable QPlay.
- 3) Start music playback.
- 4) On the player screen, tap ... and then the QPlay icon  to select “Citation 300” / “Citation 500” as speaker.



Multi-room Playback: Stream Music to Multiple Citation Speakers

- 1) Group Citation speakers:
 - a. On your smartphone or tablet, launch the HK Citation / Surround app;
 - b. Tap + to add more than one Citation speakers to the same home Wi-Fi network;

c. Tap + to set up a speaker group.

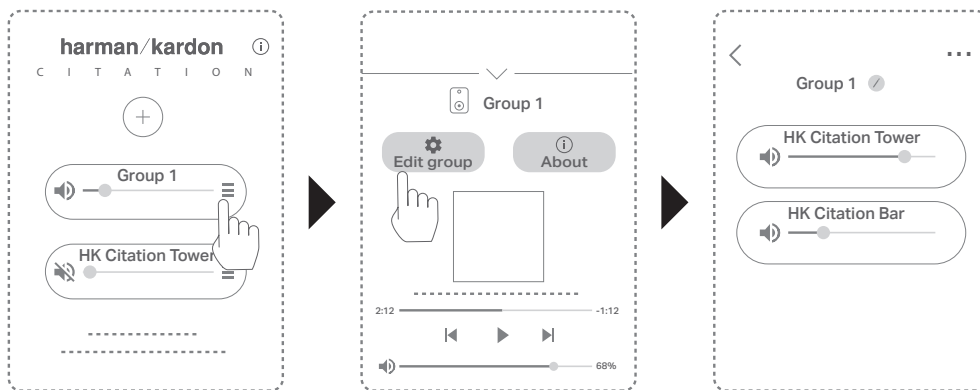


2) Multi-room playback:

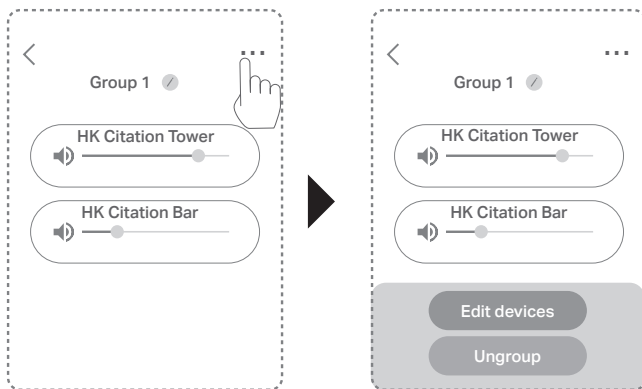
Follow the steps under "Stream QQ Music through Wi-Fi" to select the grouped speakers.

3) To adjust the volume, do the following:

- a. Launch the HK Citation / Surround app;
- b. **Volume of a speaker group:** Tap ≡ to enter the player screen and drag the 🔊 slider;
- c. **Volume of an individual speaker within the group:** On the player screen, tap ⚙️ to enter the speaker screen and drag the 🔊 slider.




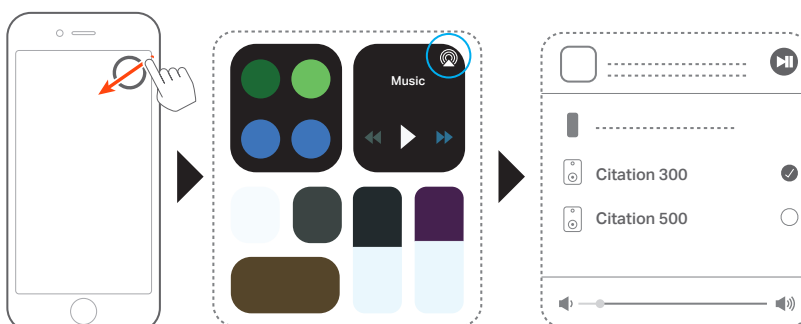
- 4) To edit the speaker group, do the following:
 - a. On the speaker screen, tap ... to edit the setup of the speaker group;
 - b. Tap **"Edit devices"** to add or remove a device;
Tap **"Ungroup"** to remove the speaker group.



Stream Music through AirPlay



With AirPlay, you can stream music on your iOS device to the Citation speaker.

- 1) Check that your iOS device has been connected to the same network as the speaker.
- 2) To enter the Control Center on an iOS device, swipe down from the upper right corner (iOS 12 or later) or swipe up from the bottom edge (iOS 11 or earlier). Tap  to select the connected speaker and then, start audio streaming from an app.




Play Music through Bluetooth



You can use your Citation speaker as an external speaker for your Bluetooth enabled smartphone or tablet.

- 1) Press  (**Bluetooth**) on the touch screen to enter Bluetooth pairing mode. During the 10 seconds of pairing period, or until a successful connection, the white circle below  (**Bluetooth**) will blink.
- 2) Select “CITATION 300” / “CITATION 500” on your smartphone or tablet to connect.
- 3) When the music is played, the name and the singer of the song will be displayed on the screen.

NOTES:

- Press and hold  (**Bluetooth**) for more than 3 seconds to disconnect all Bluetooth connection and re-enter the pairing mode.
- Bluetooth performance can be affected by the distance between this product and your Bluetooth device and the environment of operation.
- Keep a maximum distance of 10 meters (33 feet) between this product and your Bluetooth device to avoid disconnection.

Playback Controls

- : Start, pause or resume play.
- : Skip to the previous/next track.

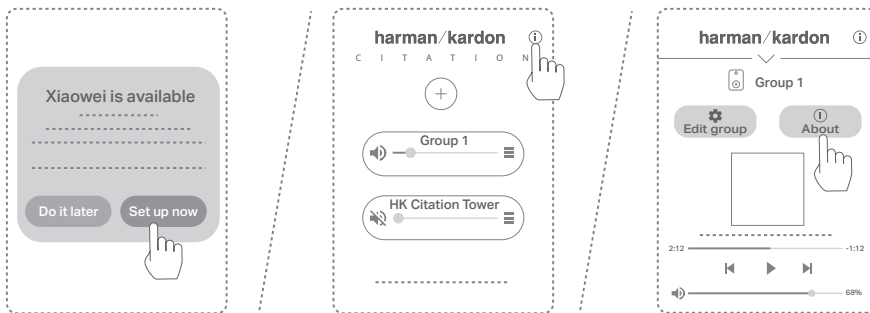
Talk to Voice Assistant

With the Tencent Xiaowei built-in, your Citation speaker allows you to easily play music, check weather forecasts, set reminders and get answers through voice commands.

Set up Xiaowei

With the HK Citation / Surround app, do one of the following:



- During the first-time setup of the Citation speaker, follow the on-screen instructions; or
- Tap ⓘ and then, follow the on-screen instructions; or
- Tap ⓘ "About" and then, follow the on-screen instructions.

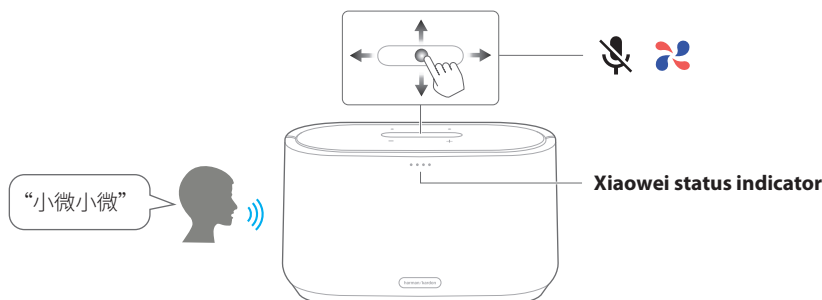


NOTE:





- Make sure that you have updated the HK Citation / Surround app to the latest version, and have enabled the Bluetooth and location service (iOS / Android).

Use Xiaowei

- 1) Say the wake word “Xiaowei Xiaowei” to activate Xiaowei.
- 2) Speak out your voice commands.
 - To talk to Xiaowei without the wake word, push .
- 3) To stop Xiaowei from listening, swipe the touch screen to tap  to mute the microphone.



Xiaowei status indicator:

	Activated
	Listening
	Responding
	Microphone muted

NOTE:

- To learn more about the services, voice commands or usage provided by Xiaowei, refer to the relevant information in the WeChat Official Account of Xiaowei.

/ SETTINGS

Volume

You have three ways to adjust the volume while playing music:

- Press - / + button on the top panel to decrease or increase the volume.
- Softly drag the volume bar on the touch screen.
- Adjust the volume on your smartphone or tablet.

Brightness of the Touch Screen

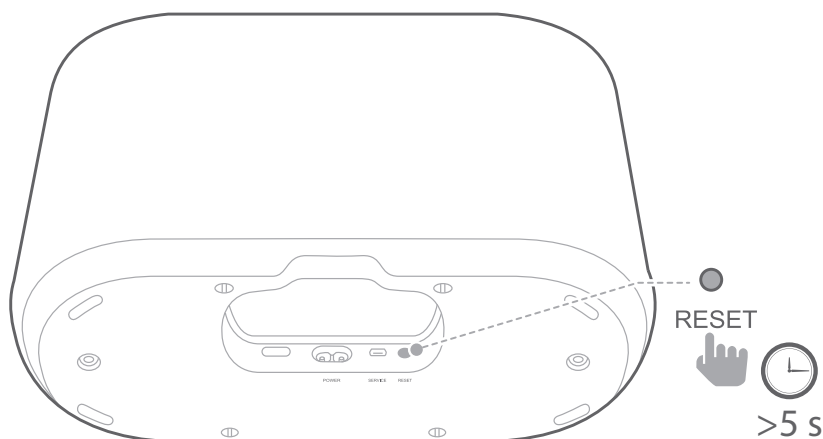
Press **⚙️ (Options)** > **☀️ (Brightness)** to adjust the brightness of the touch screen.

Software Upgrade

The software of your Citation speaker will be automatically upgraded to the latest version when the speaker is connected to the Internet via a Wi-Fi network.

Restore Factory Settings

Press and hold the **RESET** button on the bottom of your Citation speaker for 5 seconds to restore the default settings programmed at the factory. When the factory settings restore is complete, the Citation speaker will automatically power off and restart.



Cleaning and Maintenance

Clean the wool fabric occasionally. Use an approved wool shampoo and follow the instructions carefully.

Many types of stain can be removed using warm water. If you act quickly, it is not difficult to remove a spill and avoid staining. Soak up the liquid with an absorbent napkin or cloth. For dried stains use a spoon to roughen the surface. To avoid the stain spreading further start from the edge of the stain working towards the middle.

CAUTION:

- To keep the exterior surface of your Citation speaker clean, unplug the AC power cord from the speaker first.
- Never use undiluted cleaning agents, bleaching agents, ammonia or soap intended for hard surfaces.
- In all cases, we recommend contacting a professional cleaning establishment, particularly for bigger stains and for thorough cleaning.

/ SPECIFICATIONS

	CITATION 300	CITATION 500
Transducer	2 x 89mm woofer, 2 x 20mm tweeter	2 x 25mm tweeter, 2 x 131mm woofer
Output power	100W RMS	200W RMS
Signal-to-noise ratio	>80dB	>80dB
Power Supply	100-240V – 50/60Hz	100-240V – 50/60Hz
Power consumption in sleep mode	<2.0 Watts	<2.0 Watts
Bluetooth® version	4.2	4.2
Bluetooth transmitter frequency range	2402 – 2480MHz	2402 – 2480MHz
Bluetooth transmitter power	<10dBm	<10dBm
Bluetooth transmitter modulation	GFSK, $\pi/4$ DQPSK, 8DPSK	GFSK, $\pi/4$ DQPSK, 8DPSK
Wireless network	802.11a/b/g/n/ac (2.4GHz/5GHz)	802.11 a/b/g/n/ac (2.4GHz/5GHz)
2.4G Wi-Fi transmitter frequency range	2412 – 2472MHz (2.4GHz ISM Band, USA 11 Channels, Europe and others 13 Channels)	2412 – 2472MHz (2.4GHz ISM Band, USA 11 Channels, Europe and others 13 Channels)
2.4G Wi-Fi transmitter power	<20dBm	<20dBm
2.4G Wi-Fi modulation	DBPSK, DQPSK, CCK, QPSK, BPSK, 16QAM, 64QAM	DBPSK, DQPSK, CCK, QPSK, BPSK, 16QAM, 64QAM
5G Wi-Fi transmitter power	<23dBm	<23dBm
5G Wi-Fi modulation	QPSK, BPSK, 16QAM, 64QAM, 256QAM	QPSK, BPSK, 16QAM, 64QAM, 256QAM
5G Wi-Fi transmitter frequency range	5.15 - 5.35GHz, 5.725 - 5.825GHz	5.15 - 5.35GHz, 5.725 - 5.825GHz
Supported audio formats	HE-AAC, LC-AAC, MP3, Vorbis, WAV (LPCM), FLAC, Opus	HE-AAC, LC-AAC, MP3, Vorbis, WAV (LPCM), FLAC, Opus
Dimensions (W x H x D)	306 x 180 x 142 mm	374 x 212 x 172 mm

	CITATION 300	CITATION 500
Weight	4.09 kg	7.48 kg
Packaging Dimensions (W x H x D)	383 x 240 x 207 mm	452 x 274 x 234 mm
Packaging Weight (Gross)	4.86 kg	8.15 kg

/ TROUBLESHOOTING

Failed to connect to Wi-Fi.

- Make sure that Wi-Fi is turned on.
- Make sure that you have selected the right network and entered the correct password.
- Make sure that your router or modem is turned on and within the range.
- Make sure that your Citation is connected to the same wireless network as your smartphone or tablet.

The HK Citation / Surround app cannot find the device.

- Make sure that your Citation speaker is powered on.
- Make sure that your network is working properly.
- Make sure that your router or modem is powered on and within the range.

/ TRADEMARKS



The Bluetooth® word mark and logos are registered trademarks owned by Bluetooth SIG, Inc. and any use of such marks by HARMAN International Industries, Incorporated is under license. Other trademarks and trade names are those of their respective owners.



The Wi-Fi CERTIFIED Logo is certification marks of the Wi-Fi Alliance.

腾讯小微、QQ音乐是本音响的内容合作伙伴腾讯公司的商业标识或版权形象。

harman / kardon[®]
by HARMAN